

WILLIAMS COUNTY, OHIO

 2018 SPOT PAVING

 TOWNSHIP

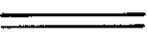
H I L L S D A L E C O. M I C H


R4W R3W R2W R1W


2 3 4 5 6 7 8 9 10 11 12 13 14 15 16 17 18 19 20 21 22

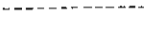
S
R
Q
P
O
N
Z
M
A
B
E
U
K
I
S
T
H
I
G
F
D
C
B
A


S
R
Q
P
O
N
Z
M
A
B
E
U
K
I
S
T
H
I
G
F
D
C
B
A


STATE HIGHWAY 


COUNTY HIGHWAY 

TOWNSHIP HIGHWAY 

SECTION LINE 

TOWNSHIP LINE 

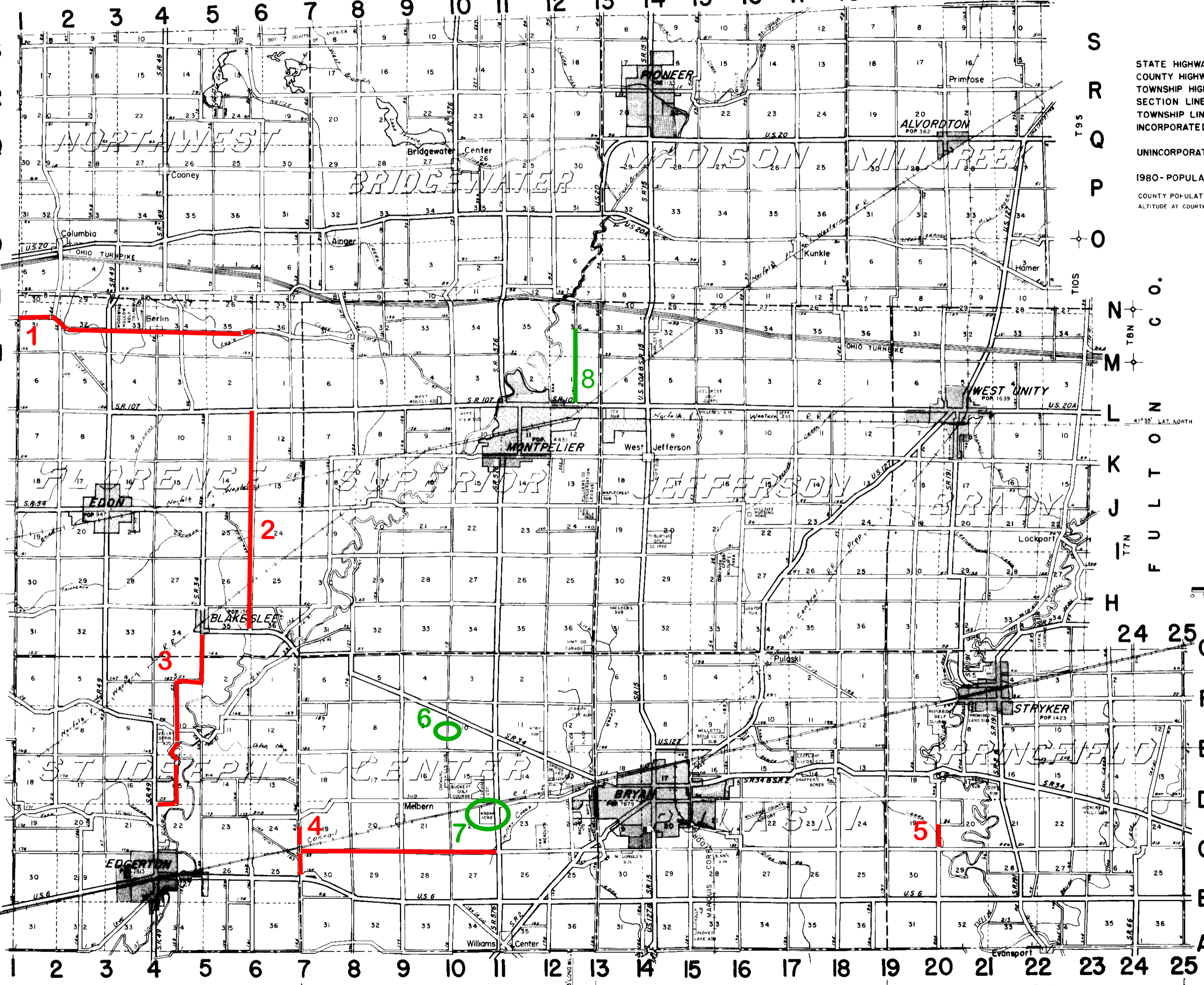
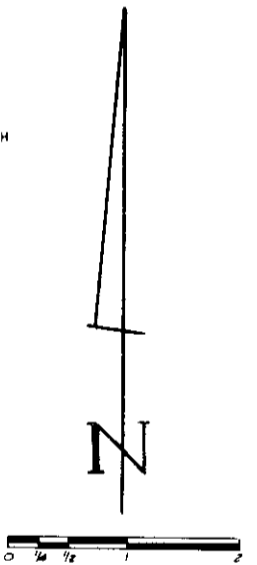
INCORPORATED VILLAGE OR CITY 

UNINCORPORATED VILLAGE  Cooney

1980 - POPULATION

COUNTY POPULATION - 36,369

ALTITUDE AT COURTHOUSE EL. 771.59



1 2 3 4 5 6 7 8 9 10 11 12 13 14 15 16 17 18 19 20 21 22 23 24 25

D E F I A N C E C O.