

Office of The Williams County Engineer

Todd J. Roth, P.E., P.S.

troth@wmscoengineer.com

ADDENDUM NO. 3

Date of Addendum: October 28, 2020

KUNKLE WASTEWATER SYSTEM IMPROVEMENTS
DIVISION A: COLLECTION SYSTEM AND PUMP STATION
Project #7-2020
Bid Date: Revised Addendum 1: NOVEMBER 2, 2020

TO ALL BIDDERS:

The Following Changes Have Been Made To The Bidding Documents:

1. In the Project Manual, Item 00120 Supplementary Instructions to Bidders, Section 7. ORC 3517.13 Compliance Certification is Item 01300 and IRS W-9 is Item 01301
2. On the Drawings, Page 19 Service Connection Plan View has been revised to address pay length.
3. On the Drawings, Page 20 Pavement Replacement Detail has been revised. Tack coat to be included with the appropriate asphalt item.
4. The Owner will allow washed uncrushed gravel for bedding stone in lieu of ODOT #57 stone.
5. Vinyl fence as shown on Page 23 of the Drawings, Pump Station Site Plan shall be included with Item 29 Pump Station line item. The fence shall be 6' Highland Privacy fence manufactured by Husker Vinyl Inc. or equal.
6. Bid Item 30: units should be SF
7. The Owner will provide a scaled reference aerial for anticipated lateral locations. Contact Engineer to request an electronic copy. cfrey@wmscoengineer.com.
8. Bid Item 32 - 6" Service Line Type C shall include replacing 4 inches of topsoil and seeding and mulching.
9. Bid Item 34 - Storm Cleanout shall include the materials and installation of a cleanout located 5 feet downstream of the proposed service line cleanout along the existing sanitary service. The existing service line between proposed cleanouts shall be removed. The cleanout shall consist of a 6" wye, 45-degree bend, 6" riser to grade, and a 6" screw on cleanout cap. Pipe and fittings shall be PVC SDR 35. Install 5 feet of 6" PVC and ferro to connect cleanout wye to existing sanitary.
10. Bid Item 35 - Septic Tank Pump and Abandonment shall include locating and uncovering of the septic tank, pumping and removal of all material from existing septic tank. Crush the existing tank walls and floor to allow drainage of infiltration.

Office of The Williams County Engineer

Todd J. Roth, P.E., P.S.

troth@wmscoengineer.com

11. Bid Item 36 - Stone Backfill shall include backfilling the crushed septic tank with ODOT #57 stone up to the inlet elevation.
12. Bid Item 37 - Pipe Connection shall include 10 feet of 6" PVC SDR 35 to connect the septic tank inlet pipe to the outlet pipe.
13. Bid Item 38 - Restoration shall include backfill and grading, placing 4 inches of topsoil and seeding of the disturbed area.
14. Informational - The intent of Items 34 to 38 is to maintain any existing storm water connections.
15. In manholes outside of pavement, adjusting rings and casting shall be wrapped with Butyl Sealant Adhesive Tape.

Revised items attached or included in email.

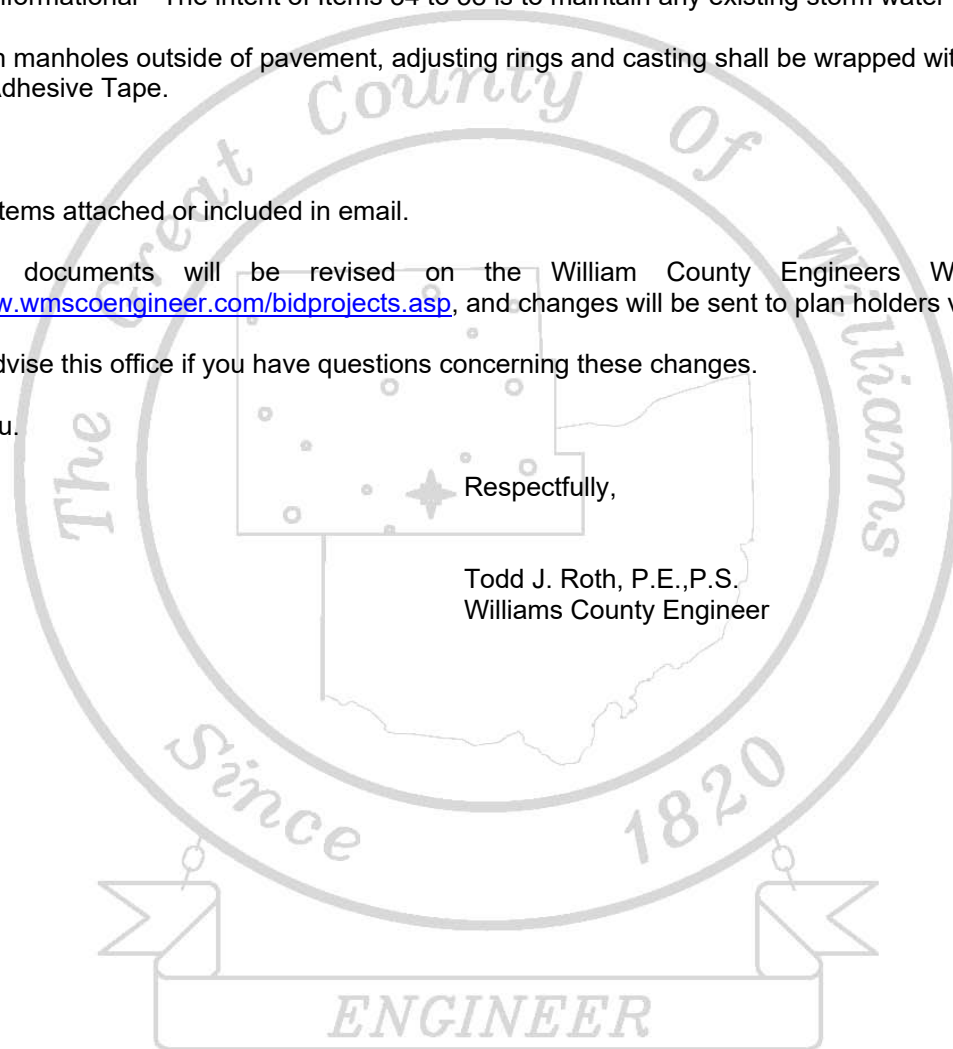
On line documents will be revised on the William County Engineers Web Page at: <http://www.wmscoengineer.com/bidprojects.asp>, and changes will be sent to plan holders via email.

Please advise this office if you have questions concerning these changes.

Thank you.

Respectfully,

Todd J. Roth, P.E., P.S.
Williams County Engineer



WILLIAMS COUNTY OFFICIAL BID FORM					ITEM 00300	
Project Sewage Collection System Village of Kunkle Williams County, Ohio			WILLIAMS COUNTY ENGINEERS OFFICE 12953 County Road G Bryan, Ohio 43506 (419) - 636 - 2454 (voice) (419) - 636 - 8687 (fax)			
Date: 05-29-20 Revised: 10-13-20 Prepared By: CC Revised By: TJR			PROJECT #7-2020			
Item	ODOT	Description	Unit	Quantity	Unit Price	Estimated Cost
Note: Quantities have been rounded from the plans						
ROADWAY						
1	201	Clearing and Grubbing	Lump	1.0		
2	201	Tree Removed, 18"	Ea.	5.0		
3	201	Tree Removed, 30"	Ea.	8.0		
4	201	Tree Removed, 48"	Ea.	2.0		
					Subtotal:	
SANITARY SEWER Inside R/W						
5	611	4' Diameter Sanitary Manhole 0'-10'	Ea.	16.0		
6	611	4' Diameter Sanitary Manhole 10'-15'	Ea.	16.0		
7	611	4' Diameter Sanitary Manhole 15'-20'	Ea.	3.0		
8	611	4' Diameter Drop Sanitary Manhole 10'-15'	Ea.	1.0		
9	611	4' Diameter Drop Sanitary Manhole 15'-20'	Ea.	3.0		
10	611	Air Release Manhole	Ea.	2.0		
11	611	4" Diameter Type B Force Main 0'-10'	L.F.	1,994.0		
12	611	8" Diameter Type B Gravity Sewer 0'-10'	L.F.	2,787.0		
13	611	8" Diameter Type B Gravity Sewer 10'-15'	L.F.	4,183.0		
14	611	8" Diameter Type C Gravity Sewer 0'-10'	L.F.	447.0		
15	611	8" Diameter Type C Gravity Sewer 10'-15'	L.F.	445.0		
16	611	10" Diameter Type B Gravity Sewer 0'-10'	L.F.	120.0		
17	611	10" Diameter Type B Gravity Sewer 10'-15'	L.F.	747.0		
18	611	10" Diameter Type B Gravity Sewer 15'-20'	L.F.	1,188.0		
19	611	12" Diameter Type B Gravity Sewer 10'-15'	L.F.	242.0		
20	611	12" Diameter Type B Gravity Sewer 15'-20'	L.F.	83.0		
21	611	6" Service Line Type B	L.F.	1,816.0		
22	611	6" Service Line Type C	L.F.	773.0		
23	611	Service Line Riser	L.F.	551.0		
24	611	Service Line Cleanout	Ea.	89.0		
25	611	8x8x6 Wye	Ea.	74.0		
26	611	10x10x6 Wye	Ea.	14.0		
27	611	12x12x6 Wye	Ea.	1.0		
28	611	Bore with Casing and 8" San Sewer	L.F.	104.0		
29	Spec	Pump Station, & Electrical	Lump	1.0		
					Subtotal:	
SANITARY SEWER Outside R/W						
30	608	4" Concrete Walk Replace	S. F. L.F.	189.0		
31	611	6" Service Line Type B	L.F.	739.0		
32	611	6" Service Line Type C	L.F.	5,643.0		
33	611	Service Line Cleanout	Ea.	100.0		
34	611	Storm Cleanout	Ea.	89.0		
35	Spec	Septic Tank Pump & Abandonment	Ea.	89.0		
36	Spec	Stone Backfill	C.Y.	300.0		
37	Spec	Pipe Connection	Ea.	89.0		
38	Spec	Restoration	Ea.	89.0		
					Subtotal:	

PAVEMENT					
39	254	2" Pavement Planning	S.Y.	14,154.0	
40	441	2" Asphalt Concrete Surface Coarse	C.Y.	1,218.0	
41	441	2" Asphalt Concrete Trench Repair	C.Y.	187.0	
42	304	8" Stone Drive for Pump Station	S.Y.	100.0	
43	608	4" Concrete Walk Replace	S.F.	2,280.0	
44	608	6" Concrete Drive Replace	S.F.	1,195.0	
45	608	Concrete Curb Replace	Ea.	5.0	
					Subtotal:
DRAINAGE					
46	611	2-2b Catch Basin	Ea.	2.0	
47	611	Yard Inlet	Ea.	2.0	
48	611	4" - 6" Dia. Storm Repair	L.F.	130.0	
49	611	8" - 12" Dia. Storm Repair	L.F.	134.0	
50	611	15" Dia. Storm Repair	L.F.	6.0	
51	611	24" Dia. Storm Repair	L.F.	8.0	
					Subtotal:
MISCELLANEOUS					
52	614	Maintenance of Traffic	Lump	1.0	
53	103	Premium for Contract Performance Bond	Lump	1.0	
54	624	Mobilization	Lump	1.0	
55	Spec	Pre Construction Site Video	Lump	1.0	
56	Spec	Post Construction Sewer Clean & Video	Lump	1.0	
					Subtotal:
EROSION CONTROL					
57	659	Residential Seeding and Mulching	S.Y.	12,000.0	
58	832	Stormwater Pollution Prevention Plan	Lump	1.0	
59	832	Execution of SWPPP	Lump	1.0	
					Subtotal:

TOTAL BASE BID

PLEASE NOTE: WILLIAMS COUNTY WILL PRODUCE A FILLABLE BID FORM AND POST ON THE ENGINEERS WEB PAGE

It is the Owners intent that all work shown on the plans and/or specifications be completed for the amount listed on this bid form. The above quantities are estimated amounts only. The final quantities may be more or less than listed above. Williams County will pay for the actual amount of materials/work/bid item delivered or performed at the unit price listed above. If an item is required to complete, but not specifically listed above, the Bidder should included that cost in other related bid items. The project will be considered for award based on the Total Base Bid.

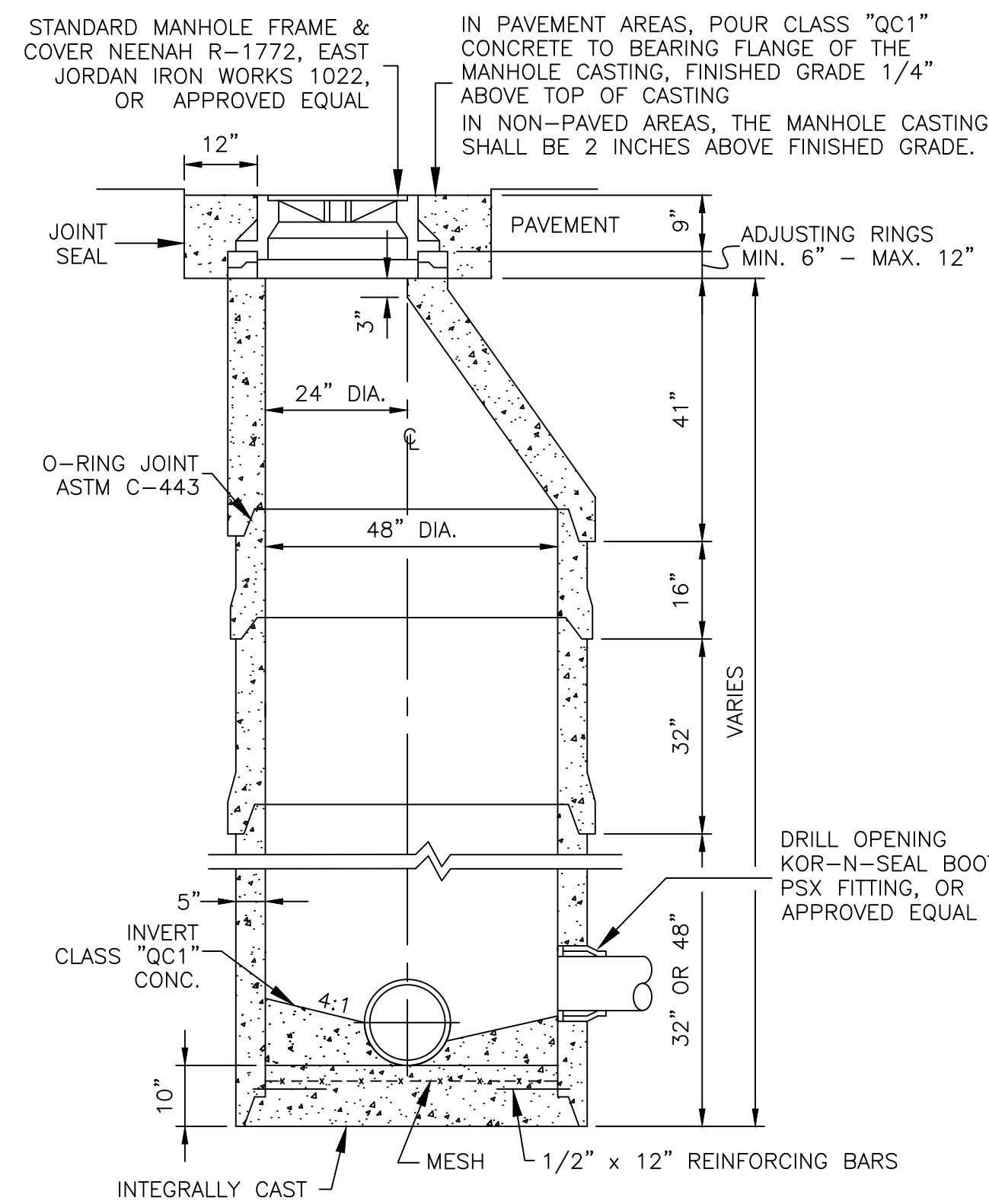
SUBMITTED BY:

BIDDER

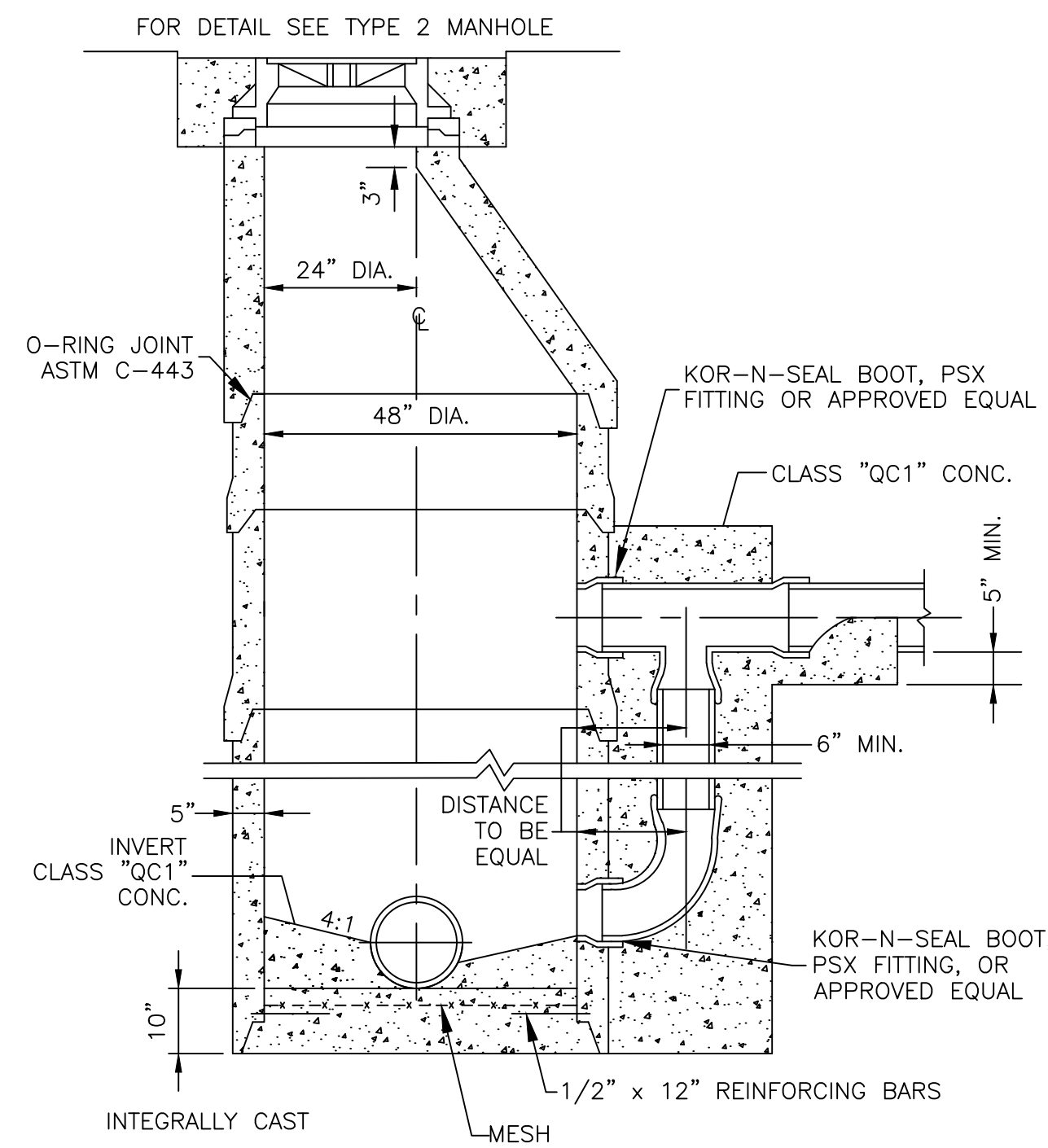
SIGNATURE

Date

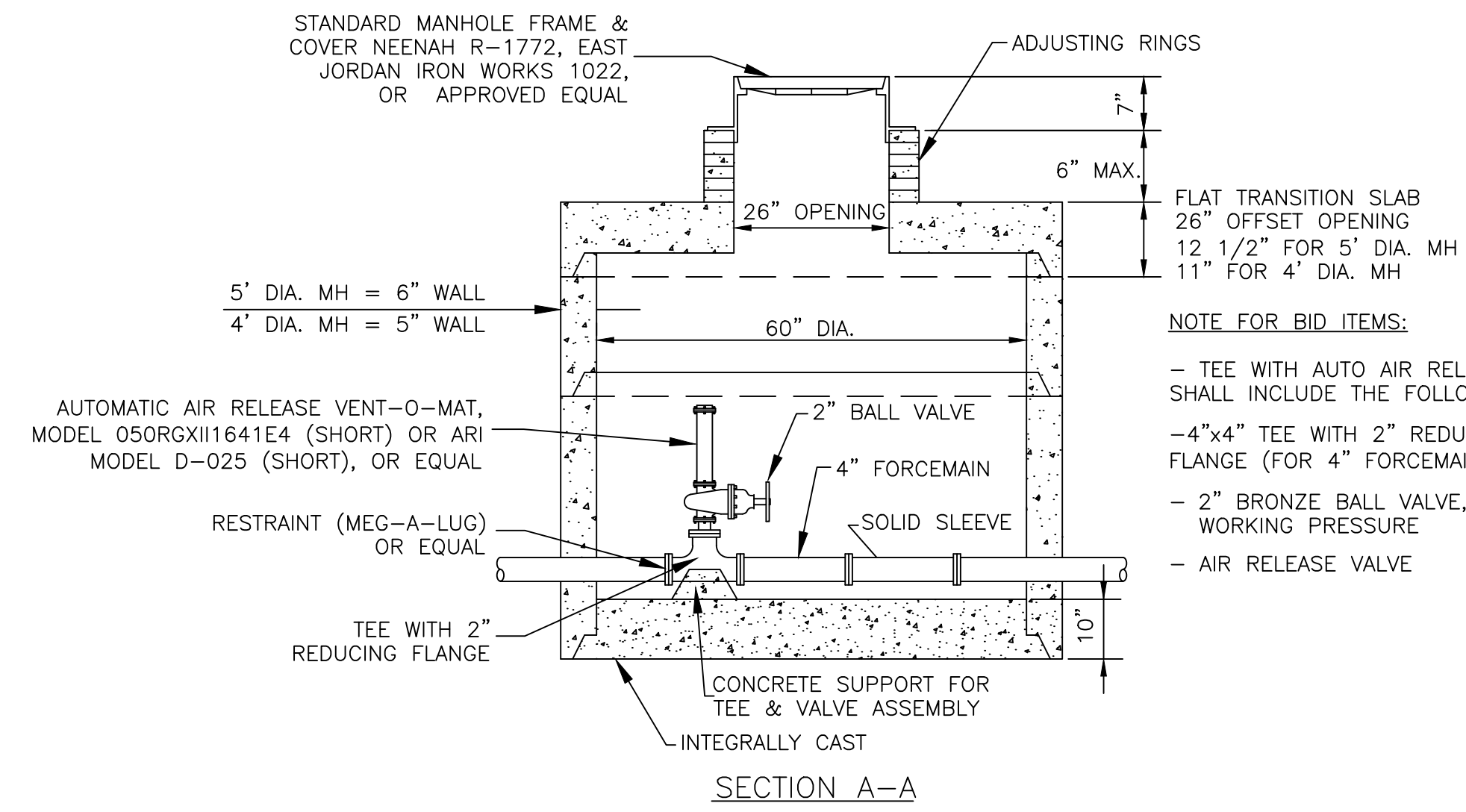
END OF ITEM



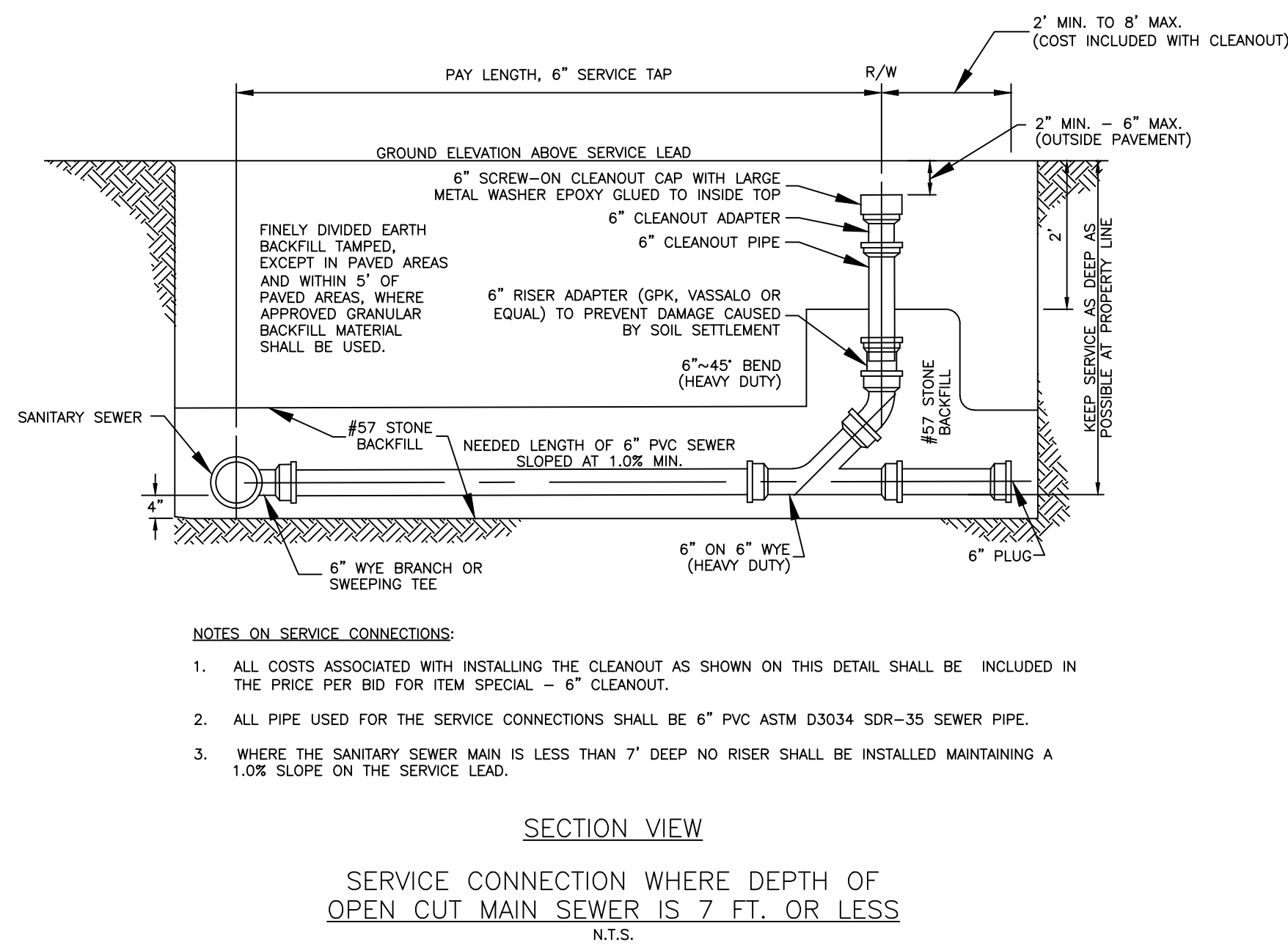
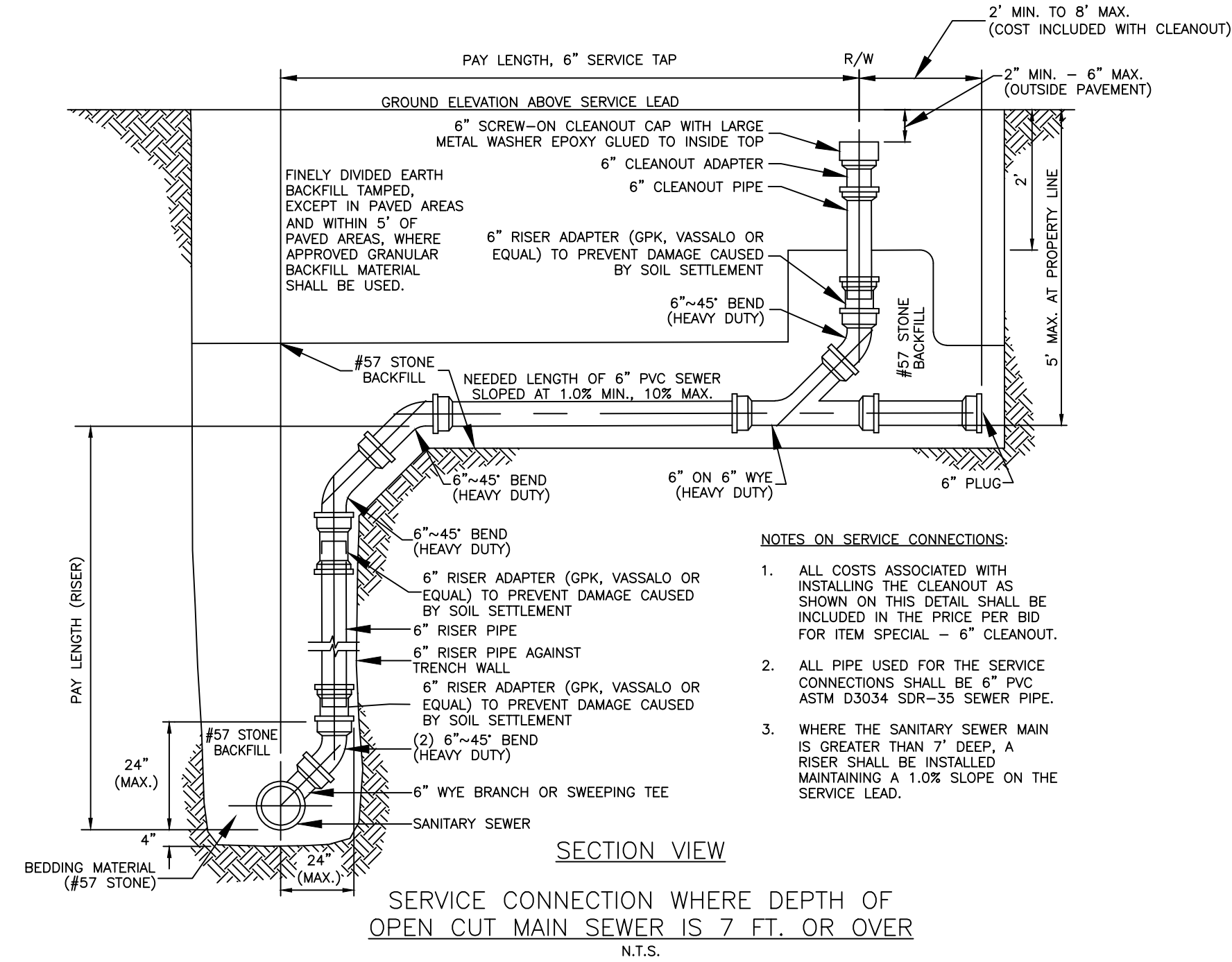
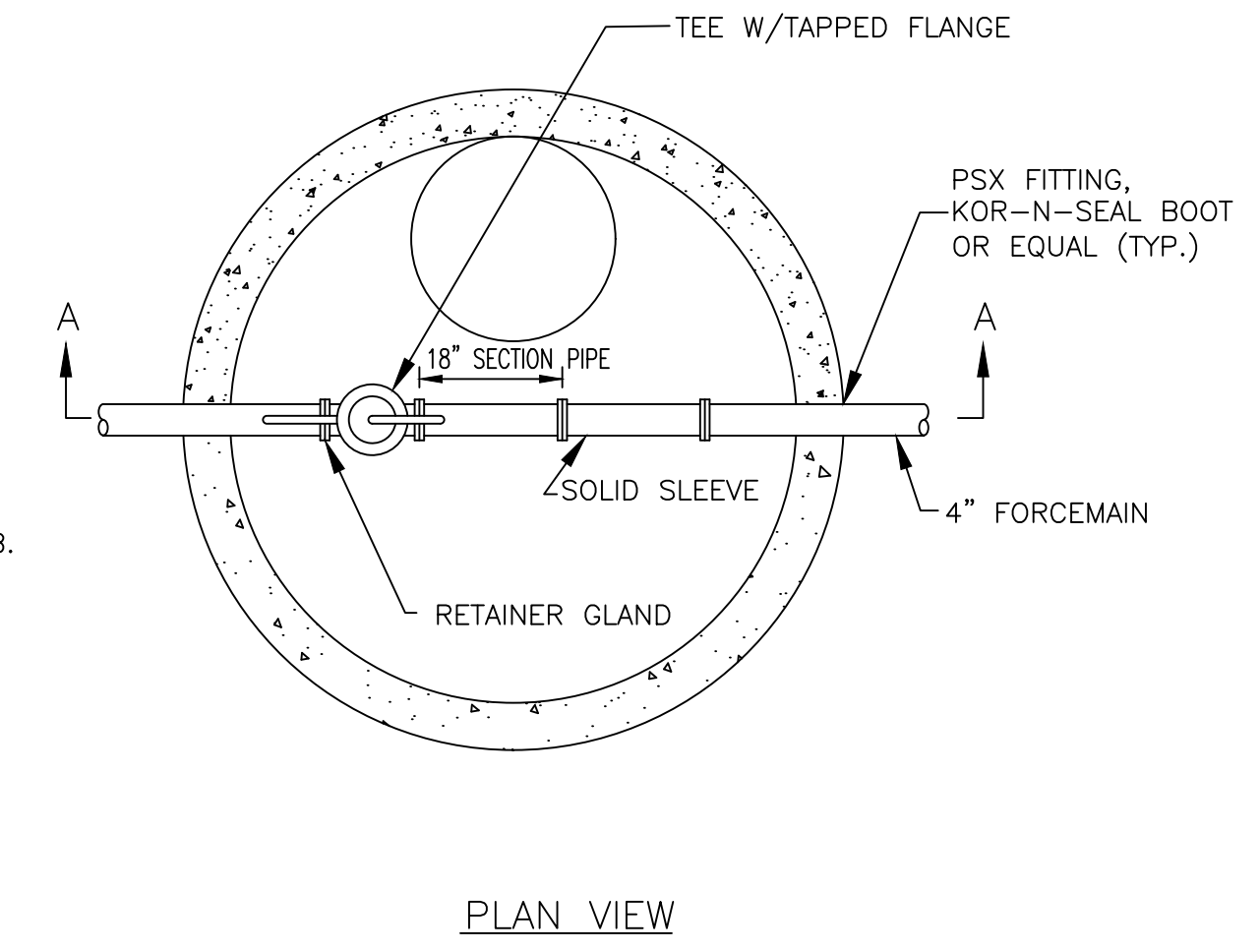
SANITARY SEWER MANHOLE DETAIL
48" DIAMETER "O" RING JOINT
ASTM C-478
TYPE 2 STANDARD MANHOLE
SCALE: 1" = 2'



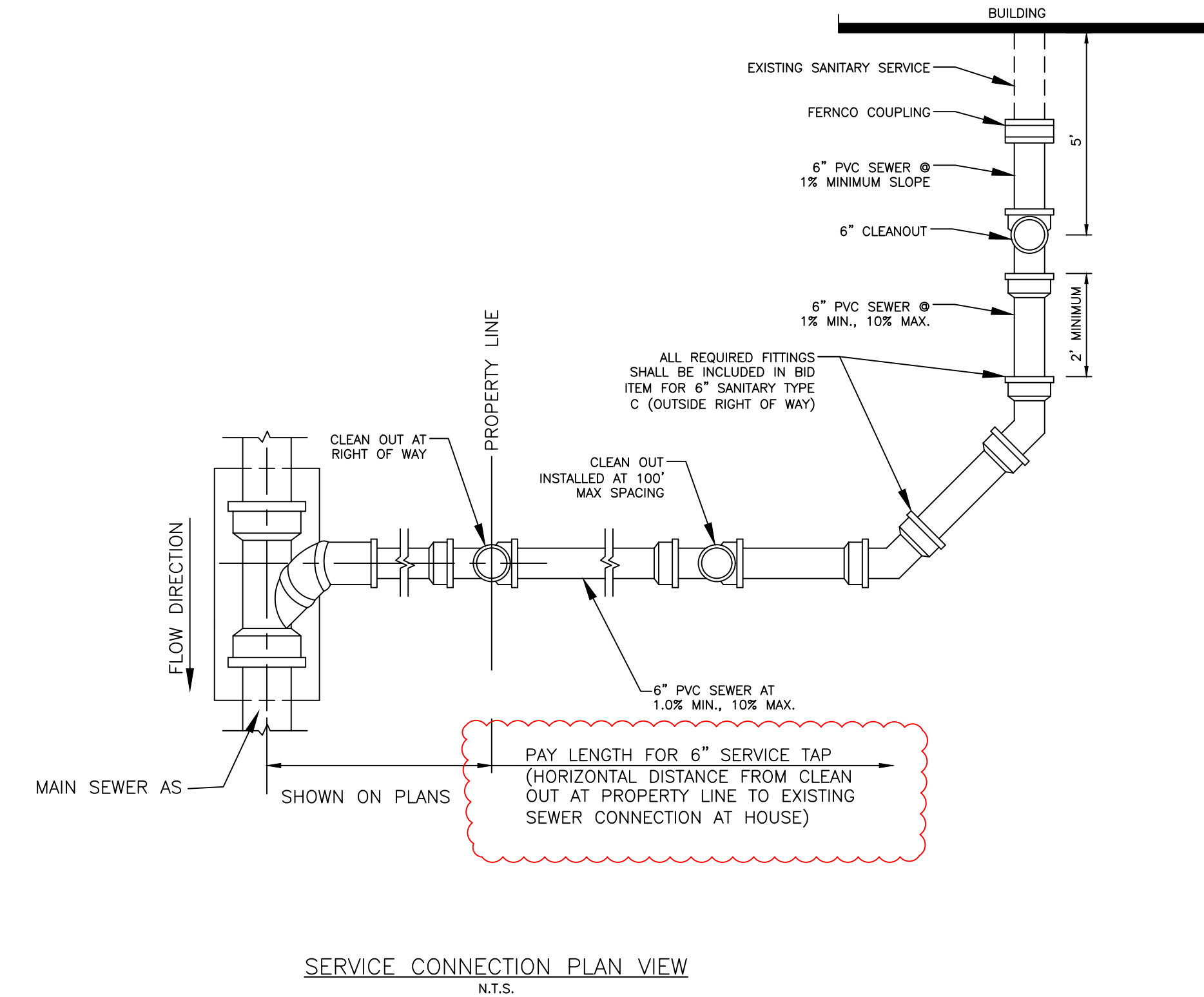
SANITARY SEWER PRECAST MANHOLE
MAXIMUM PIPE SIZE 36 INCH
ASTM C-478
TYPE 3 DROP MANHOLE



TYPICAL ACCESS MANHOLE WITH AUTOMATIC AIR RELEASE
N.T.S.

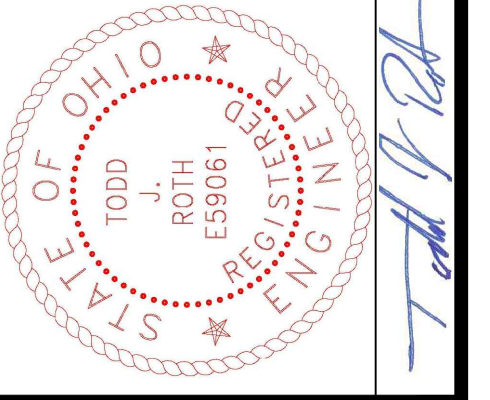


SERVICE CONNECTION DETAILS
N.T.S.



Todd J. Roth, P.E., P.S.
Williams County Engineer

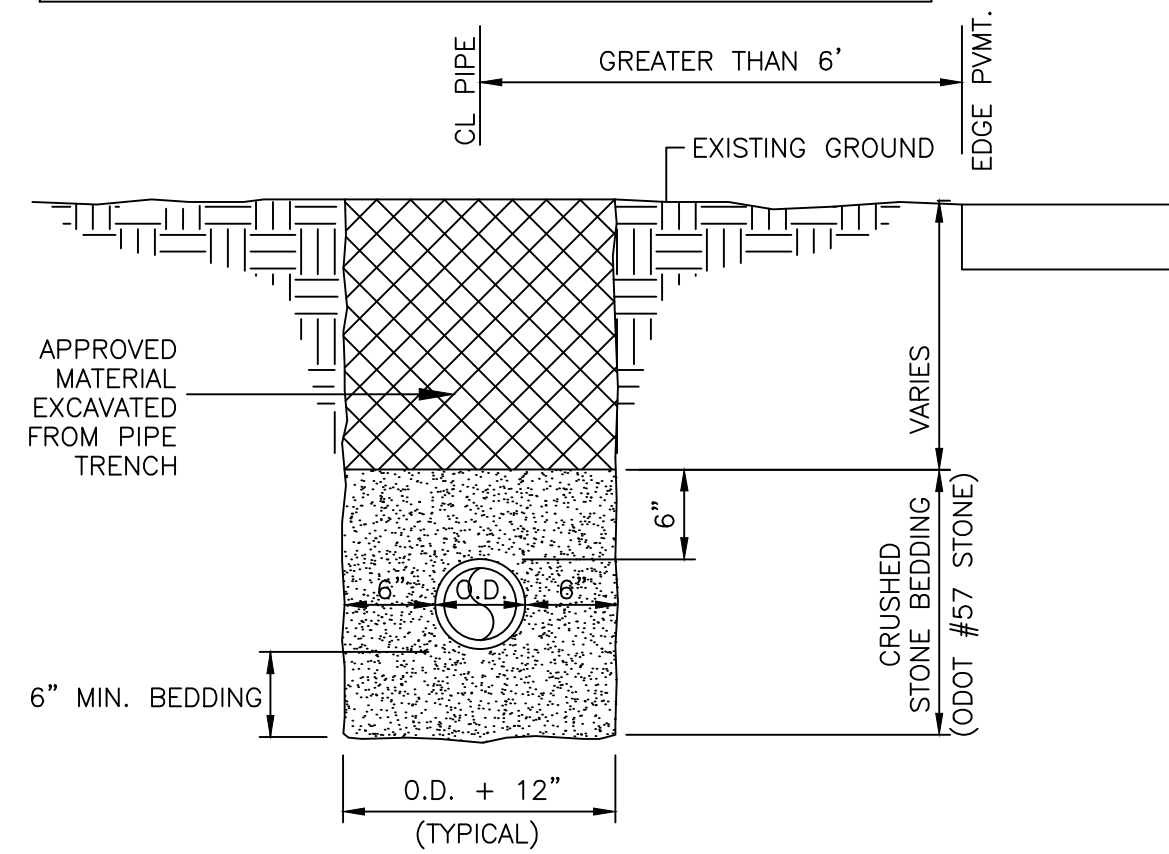
12953 County Road G
Bryan, Ohio 43506
419-636-2454
fax 419-636-6867



PROPOSED CONSTRUCTION for
KUNKLE WASTEWATER SYSTEM IMPROVEMENTS
DIVISION A
GENERAL DETAILS

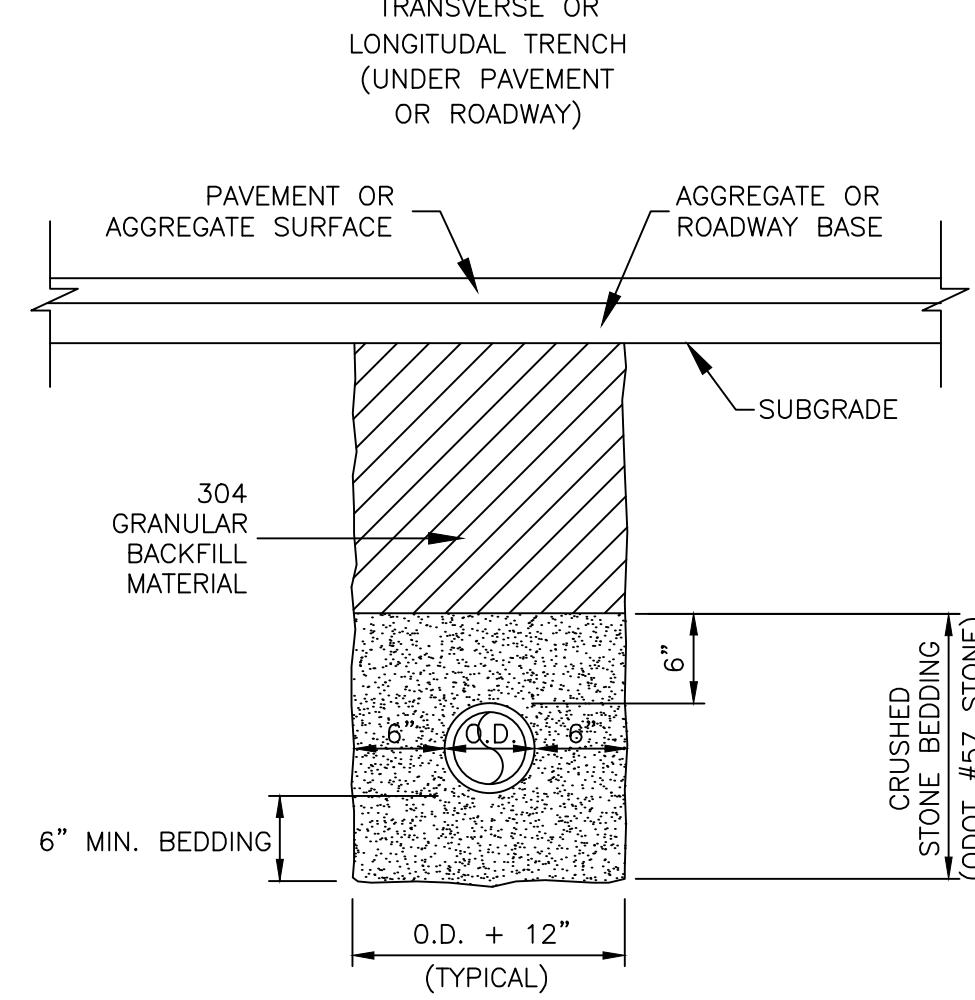
Date:
10/13/2020

THE INTENT OF TRENCH DETAILS IS TO INDICATE BEDDING AND BACKFILL REQUIREMENTS. TRENCH SIDESLOPES SHALL CONFORM TO OSHA STANDARD REQUIREMENTS FOR LOCAL SOIL CONDITIONS.



NOTE: THESE AREAS ARE PAID AS "TYPE C BACKFILL".

TRENCH DETAIL A
PIPE NOT UNDER ROADWAY INFLUENCE
N.T.S.

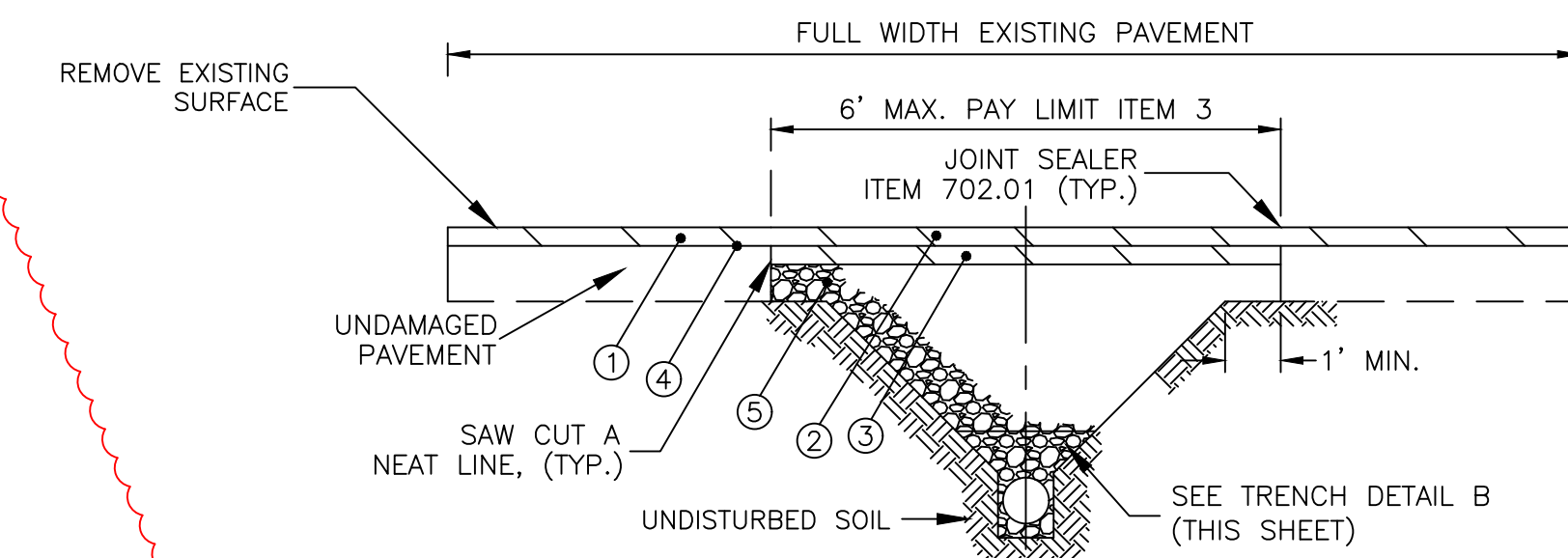


NOTE: THESE AREAS ARE PAID AS "TYPE B BACKFILL". TRENCHES DIRECTLY BENEATH SIDEWALKS SHALL BE FILLED WITH GRANULAR BACKFILL.

TRENCH DETAIL B
PIPE UNDER ROADWAY INFLUENCE
N.T.S.

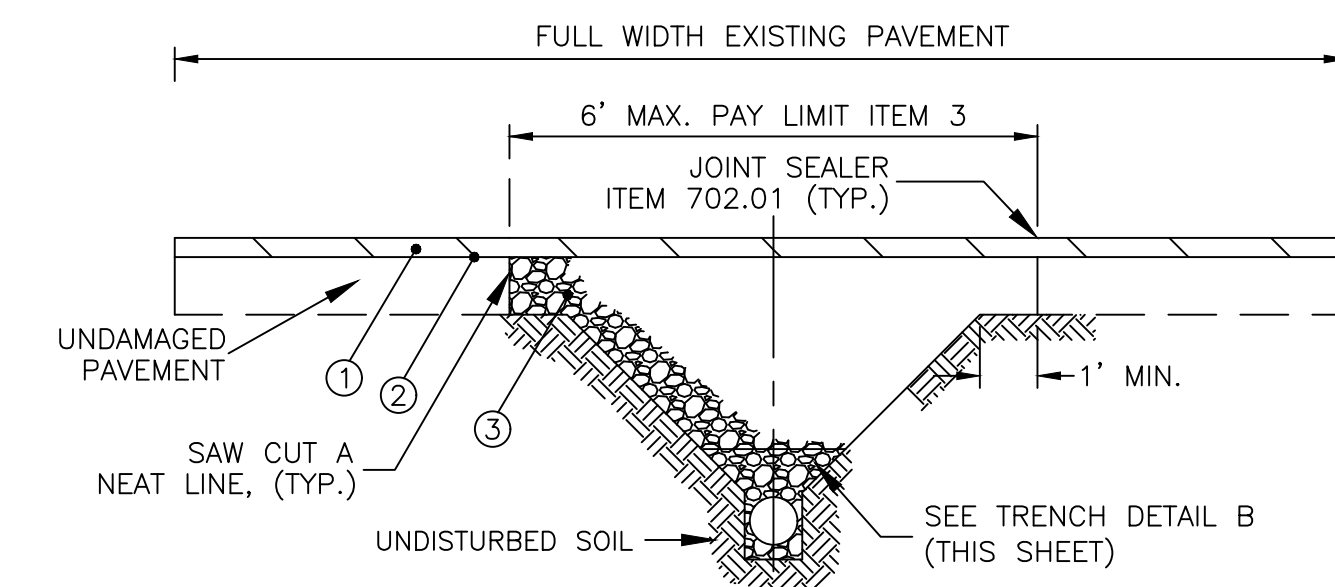
AS REVISED BY ADDENDUM 3

- TYPICAL SECTION FOR COUNTY ROADS (PLEASANT & ANGOLA):
- ① 2" - ITEM 254 ~ PAVEMENT PLANING
 - ② 2" - ITEM 441 ~ ASPHALT CONCRETE, SURFACE COURSE, TYPE 1, PG64-22 (448)
 - ③ 2" - ITEM 441 ~ ASPHALT CONCRETE, INTERMEDIATE COURSE, TYPE 1, PG64-22 (448)
 - ④ - ITEM 407 ~ TACK COAT @ 0.085 GAL./SY.
 - ⑤ - ITEM 304 ~ AGGREGATE BASE (COST INCLUDED WITH PERTINENT CONDUIT BID ITEM)

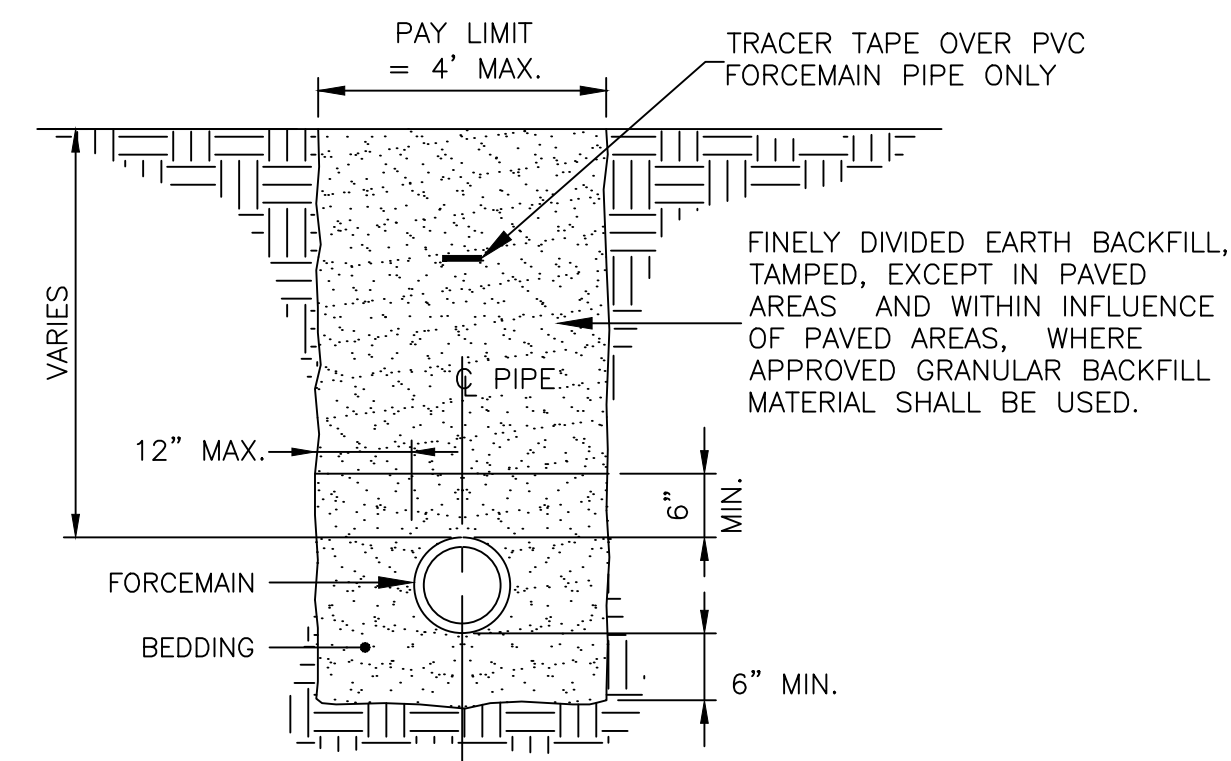


PAVEMENT REPLACEMENT DETAILS
N.T.S.

- TYPICAL SECTION FOR ALL OTHER SURFACE STREETS
- ① 2" - ITEM 441 ~ ASPHALT CONCRETE, SURFACE COURSE, TYPE 1, PG64-22 (448)
 - ② - ITEM 407 ~ TACK COAT @ 0.085 GAL./SY.
 - ③ - ITEM 304 ~ AGGREGATE BASE (COST INCLUDED WITH PERTINENT CONDUIT BID ITEM)

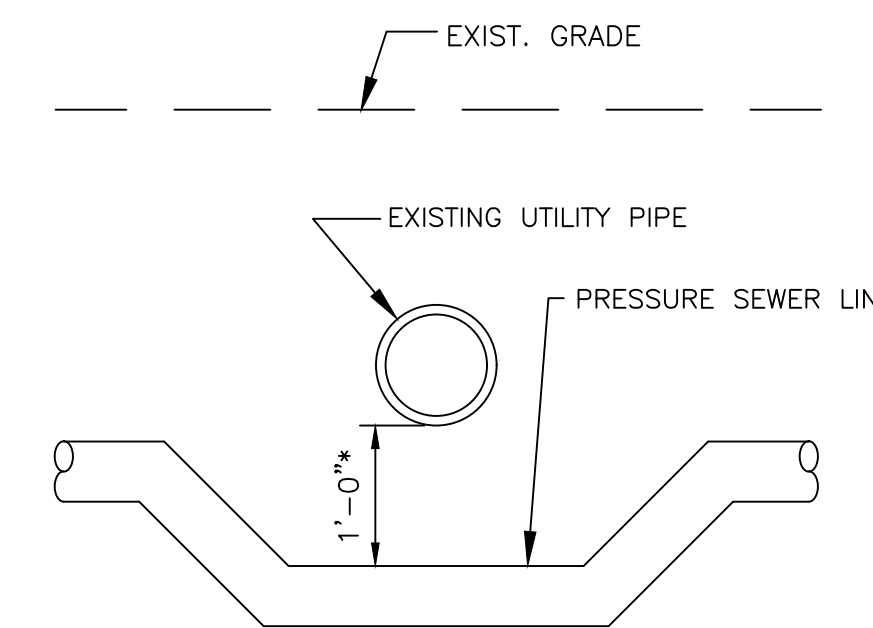


PAVEMENT REPLACEMENT DETAILS
N.T.S.



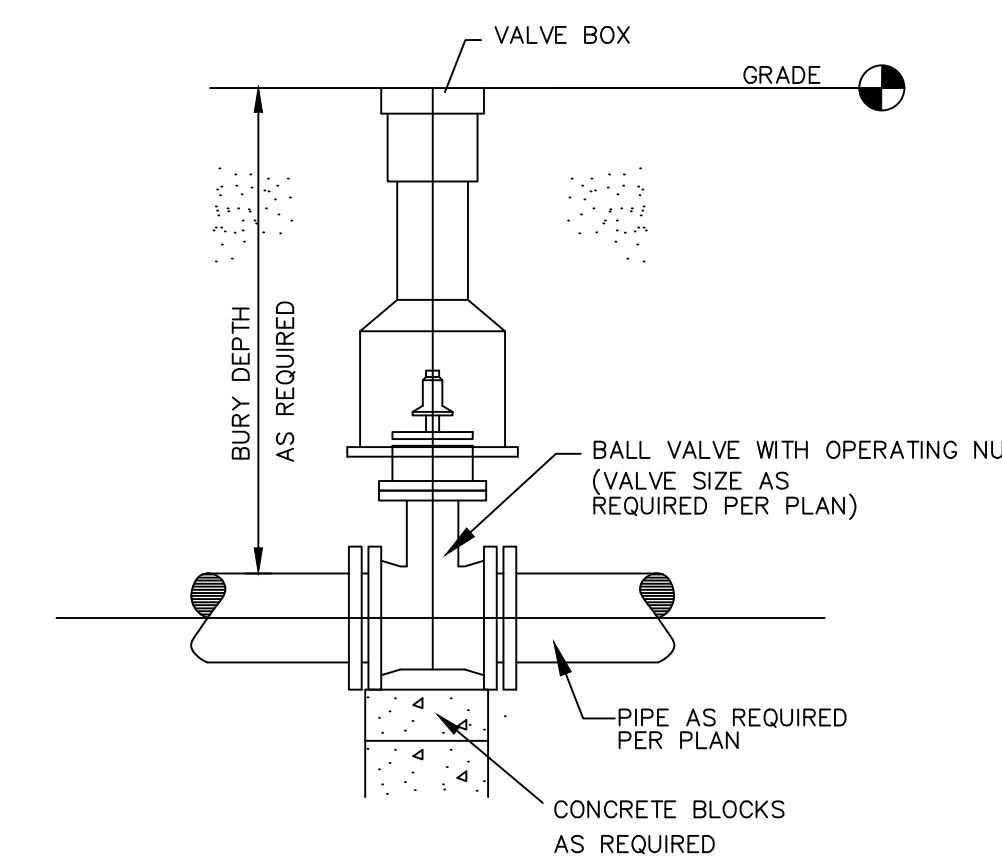
- NOTES:
- ALL GRANULAR BEDDING MATERIAL SHALL BE #57 STONE.
 - ALL GRANULAR BACKFILL MATERIAL WITHIN THE PAVEMENT AREAS OF INFLUENCE SHALL BE ODOT ITEM 304 BACKFILL SHALL BE PLACED IN LIFTS NOT TO EXCEED 8 INCHES AND SHALL BE COMPACTED TO A MINIMUM OF 98% OF STANDARD PROCTOR.

FORCE MAIN TRENCH DETAIL (OPEN CUT)
N.T.S.



*PROVIDE MIN. 1'-6" CLEARANCE FOR WATER PIPES

TYPICAL PRESSURE SEWER CLEARANCE DETAIL
N.T.S.

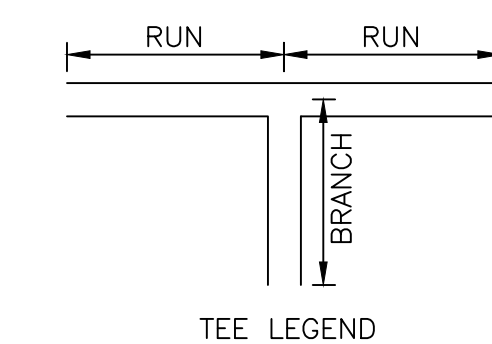


NOTE: BALL VALVE, SIZE AS PER PLANS, SHALL INCLUDE VALVE AND VALVE BOX AS SHOWN IN THIS DETAIL, MECHANICAL JOINT RESTRAINTS, AND ODOT ITEM 304 GRANULAR BACKFILL, FULL DEPTH, A MINIMUM OF 3' ALL AROUND VALVE.

BALL VALVE DETAIL
N.T.S.

DEFLECTION ANGLE	TYPE OF BEND	PVC Pipe Size									
		2" & 3"	4"	6"	8"	10"	12"	14"	16"	18"	20"
11 1/4°	HORZ.	4'	4'	4'	4'	4'	4'	4'	4'	4'	4'
	VERT.	4'	4'	5'	6'	8'	9'	10'	12'	13'	15'
22 1/2°	HORZ.	4'	4'	4'	4'	4'	5'	5'	6'	7'	7'
	VERT.	6'	7'	10'	13'	15'	18'	21'	24'	27'	29'
45°	HORZ.	4'	4'	5'	7'	8'	9'	11'	12'	14'	15'
	VERT.	12'	14'	20'	27'	32'	38'	44'	50'	55'	61'
90°	HORZ.	7'	9'	12'	16'	19'	23'	26'	30'	33'	36'
	VERT.	20'	25'	35'	47'	56'	67'	76'	86'	96'	105'
TEES	RUN	4'	4'	5'	7'	8'	8'	8'	8'	8'	8'
	BRANCH	4'	4'	4'	4'	4'	14'	23'	34'	43'	53'
DEAD ENDS	RUN	20'	24'	35'	46'	56'	66'	76'	87'	97'	107'
	BRANCH										

NOTE: RESTRAINED JOINTS SHALL BE EITHER UNI-FLANGE SERIES 1300-C FOR MECHANICAL JOINTS AND SERIES 1350-C FOR PVC BELL JOINTS OR EBBA IRON, INC. SERIES 500 OR SERIES 1100 PV FOR MECHANICAL JOINTS AND SERIES 1500 OR 2000 HV FOR PVC BELL JOINTS. ALL BOLTS AND NUTS SHALL BE COR-TEN.



(BACKHOE EXCAVATION)
RESTRAINED JOINT TABLE - 150 PSI

DRIVES DISTURBED DUE TO CONSTRUCTION ARE TO BE REPLACED WITH A MINIMUM FROM THE FOLLOWING TABLE. THE COST FOR ASPHALT DRIVES IS TO BE INCLUDED IN THE UNIT PRICE FOR ITEM 448, ASPHALT DRIVE REPLACEMENT. THE COST FOR CONCRETE DRIVES IS TO BE INCLUDED IN THE UNIT PRICE FOR ITEM 452, UNREINFORCED CONCRETE DRIVE REPLACEMENT. THE COST FOR STONE OR GRAVEL DRIVE IS TO BE INCLUDED IN THE UNIT PRICE FOR THE PERTINENT CONDUIT ITEM.

ASPHALTIC DRIVES

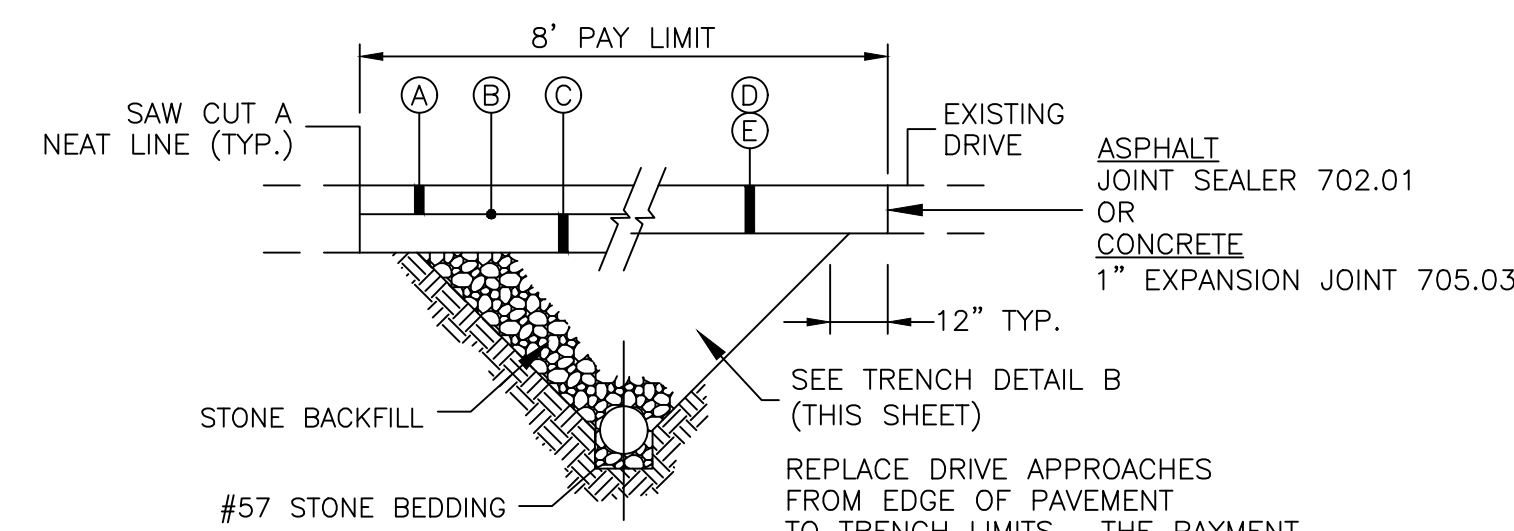
- (A) 3" - ITEM 448 ~ ASPHALT CONCRETE, SURFACE COURSE, PG64-22, TYPE 1 (2 LIFTS)
- (B) - ITEM 408 ~ PRIME COAT @ 0.40 GAL./SY.
- (C) 6" - ITEM 304 ~ AGGREGATE BASE

CONCRETE DRIVES

- (D) 6" - ITEM 452 ~ NON-REINFORCED PORTLAND CEMENT
- (E) 6" - ITEM 451 ~ REINFORCED PORTLAND CEMENT

STONE DRIVES

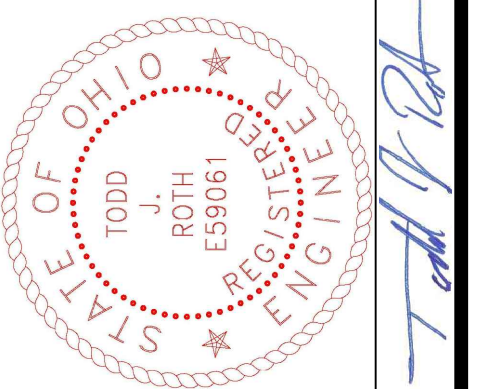
- (E) 6" - ITEM 304 ~ STABILIZED CRUSHED AGGREGATE



- NOTES:
- EXISTING CONCRETE DRIVES THAT CONTAIN REINFORCEMENT SHALL BE REPLACED WITH SIMILAR REINFORCEMENT. ALL OTHER CONCRETE DRIVES SHALL BE REPLACED WITHOUT REINFORCEMENT.

DRIVEWAY REPLACEMENT DETAILS
N.T.S.

Todd J. Roth, P.E., P.S.
Williams County Engineer
12953 County Road G
Bryan, Ohio 43506
419-636-2454
fax 419-636-6667



PROPOSED CONSTRUCTION for
KUNKLE WASTEWATER SYSTEM IMPROVEMENTS
DIVISION A
GENERAL DETAILS

Date:
10/13/2020