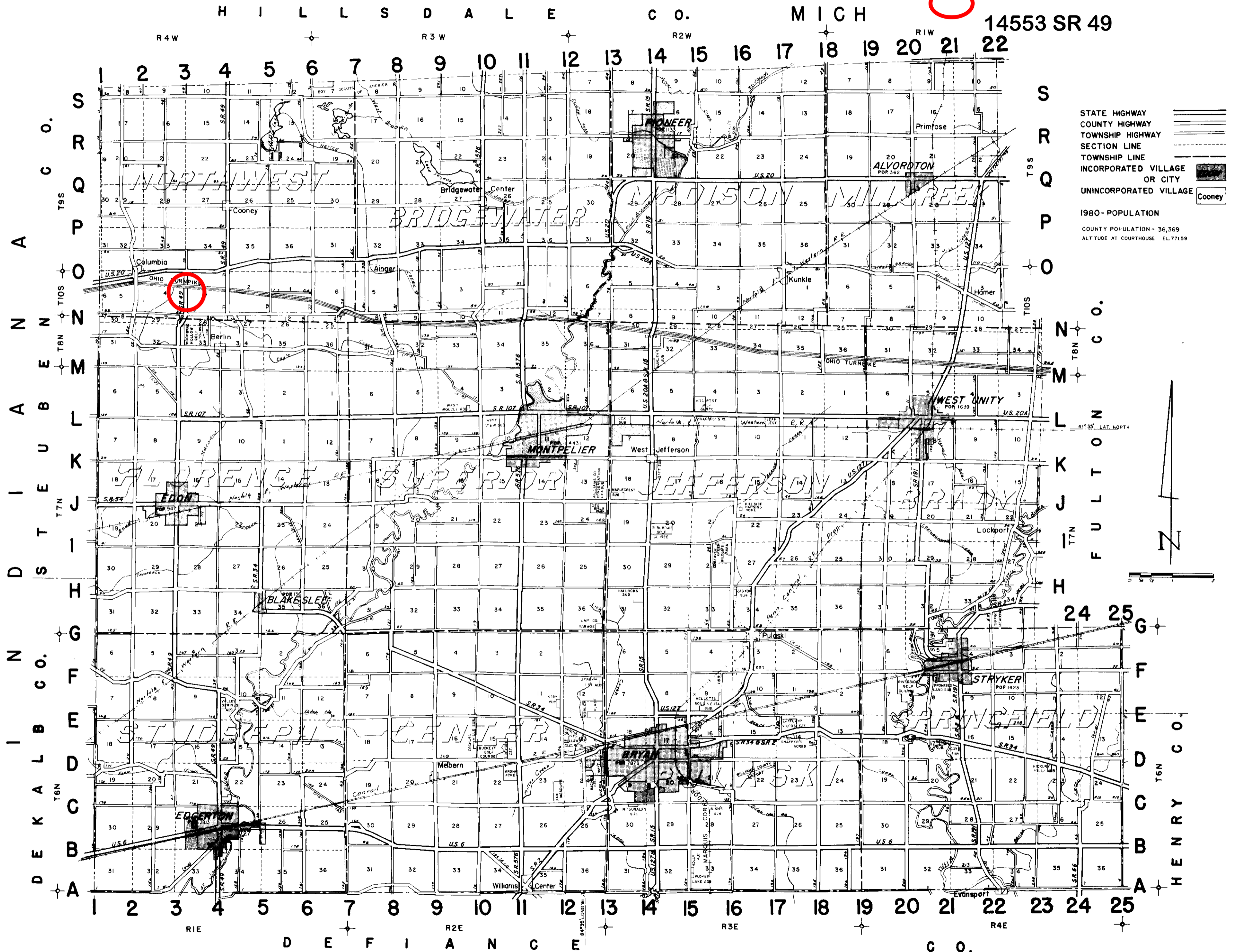


WILLIAMS COUNTY, OHIO

PROJECT LOCATION

14553 SR 49



- STATE HIGHWAY
 - COUNTY HIGHWAY
 - TOWNSHIP HIGHWAY
 - SECTION LINE
 - TOWNSHIP LINE
 - INCORPORATED VILLAGE OR CITY
 - UNINCORPORATED VILLAGE
- 1980 - POPULATION
COUNTY POPULATION - 36,369
ALTITUDE AT COURTHOUSE EL. 771.59

